

Easthaus



— Offers in Excess of £500,000



— Ground Floor, First Floor Maisonette



— 2 Bedrooms



— 1 Bathroom



— Circa 700 sqft

Temple Street, Bethnal Green, E2

Offered on an extended lease of 178 years, this two-bedroom maisonette spans 700 sq ft and benefits from a west facing private patio garden, ideally positioned for the numerous great cafes, restaurants and bars surrounding Columbia Road, Hackney Road, and Broadway Market.



Easthaus



The spacious open-plan kitchen and reception spans the entire ground floor, creating a fantastic space for both relaxing and entertaining. The kitchen is finished with wooden worktops, a white tiled splashback, and freestanding appliances, while the reception area offers ample space for both dining and lounging. Full-height doors open directly onto the private garden, extending the living space outdoors. A shed provides additional storage, ideal for bikes, garden essentials, or outdoor furniture.

Upstairs, the main bedroom is generously sized, featuring built-in wardrobes and a large window that fills the room with natural light. The second double bedroom is equally well-proportioned, offering flexibility as a guest room or home office. Both bedrooms are finished with neutral carpets, creating a warm and inviting feel. The fully tiled bathroom includes a bath with an overhead shower.

Area

Some of the immediate hotspots include: The Common, Ozone and The Marksman. The property is within easy reach of the green open spaces of London Fields, Victoria Park, Haggerston Park and Hackney City Farm, as well as The Regent's Canal towpath and London Fields Lido.

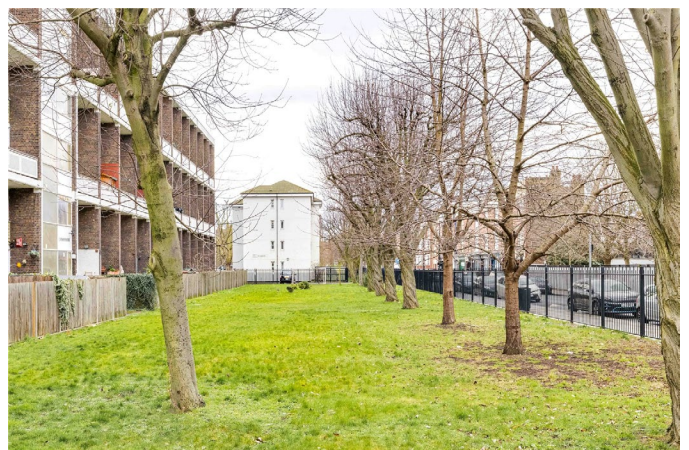
Transport links are in abundance with Cambridge Heath overground station only circa 0.2 miles away - getting you into London Liverpool Street station in 2 stops - and Bethnal Green overground station circa 0.5 miles (Central line) for access to The City and West End. There are also excellent bus routes along Hackney Road for connections towards Victoria, Oxford Circus, Hackney Wick and Walthamstow.

Details

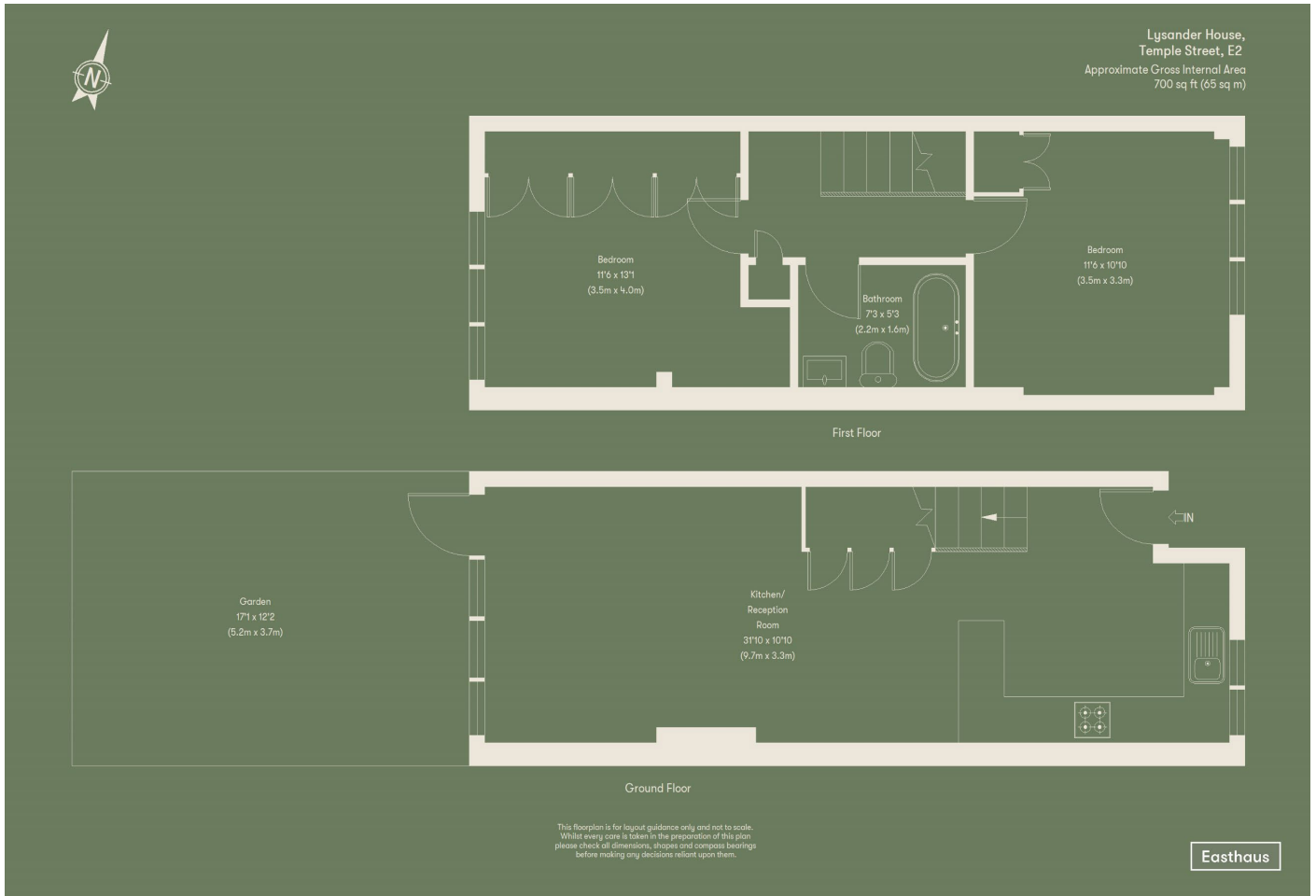
Tenure: Leasehold circa 178 years remaining
Service charges: circa £2,745.83
Ground rent: £10pa
Local Authority: Tower Hamlets
Council Tax Band C
EPC Rating: C
EWS1 suitable for lending (B1)



Easthaus



Easthaus



Important notice:

1. Particulars: These particulars are not an offer or contract, nor part of one. You should not rely on statements by Easthaus Limited in the particulars or by word of mouth or in writing ("information") as being factually accurate about the property, its condition or its value. Neither Easthaus Limited nor any joint agent has any authority to make any representations about the property, and accordingly any information given is entirely without responsibility on the part of the agent(s), seller(s) or lessor(s). 2. Photos and floorplans: The photographs show only certain parts of the property as they appeared at the time they were taken. Areas, measurements and distances given are approximate only. 3. Regulations, etc.: Any reference to alterations to, or use of, any part of the property does not mean that any necessary planning, building regulations or other consent has been obtained. A buyer or lessee must find out by inspection or in other ways that these matters have been properly dealt with and that all information is correct. 4. VAT: The VAT position relating to the property may change without notice. 5. Particulars dated 27th February 2025. EastHaus Limited is registered in England with registered number 10275389. Our registered office is The Oast, New Road, East Malling, Kent, ME19 6BJ.

